



[Click here to visit the TABA Homepage!](#)

## On The Level - TABA On The Level October 2015

### Contents:

- [2015 Calendar](#)
- [2016 Home & Garden Show](#)
- [Builders Surplus Sale](#)
- [OSHA Confined Spaces Rule](#)
- [TAB Builder & Remodeler Contracts](#)
- [HomePAC Sporting Clay Shootout](#)
- [Permit Statistics](#)
- [Spike Club](#)
- [Membership Corner](#)
- [Membership News and Initiatives](#)
- [Membership Benefit Overview](#)
- [Get out and Vote!](#)

### 2015 Events

February 20 - 22	<a href="#">Home &amp; Garden Show</a> (@ <a href="#">Bell County Expo Center</a> )	
March 4	<a href="#">Rally Day</a> (@ Texas State Capitol)	
March 27	Crawfish Boil Event (@ <a href="#">Lamar Advertising Facility</a> )	
April 16	Parade of Homes Kickoff Party (@ <a href="#">Dead Fish Grill</a> )	
April 17 - 19	<a href="#">Parade of Homes</a> (Weekend 1)	
April 24 - 26	<a href="#">Parade of Homes</a> (Weekend 2)	
May 8	TABA Golf Tournament (@ <a href="#">Wildflower Country Club</a> )	
June 5	HomePAC Washers Tournament (@ Overlook Pavilion, Belton Lake)	
September 24	HomePAC Skeet Shoot (@ <a href="#">Weber's Outdoors</a> , Troy)	
October 22	TABA Ladies Club - Sip & Shop Social	
October 28	Builder Luncheon on Risk Mitigation and Contracts (@ TABA)	
December 7	TABA Christmas Party, Awards, and 2016 Officer Installation	(@ Grand Avenue Theater, Belton)

### 2016 Events

February 26 - 28	<a href="#">Home &amp; Garden Show</a> (@ <a href="#">Bell County Expo Center</a> )
April 22 - 24	<a href="#">Parade of Homes</a> (Weekend 1)
April 29 - May 1	<a href="#">Parade of Homes</a> (Weekend 2)

[On The Level - Table Of Contents](#)

**Don Ringler**  
 CHEVROLET TOYOTA SEAT  
 www.DonRinglerAutos.com

**ACME BRICK**  
 Since 1891  
 5200 S. General Bruce Dr. Office 254-778-8088  
 Temple, TX Fax 254-778-2279

**Kohutek**  
 Engineering & Testing, Inc.  
 CONSULTING ENGINEERS **Gordon L. Kohutek, P.E.**  
 President  
 3200 East University Avenue, Georgetown, TX 78626  
 (office) 512-930-5832 • (fax) 512-930-5852

Home Loans | Construction Loans  
**ExtraCo** Banks. Extraordinary Starts Here  
 Member FDIC | www.extracobanks.com | 254.774.1500

Gold Star  
 Cabinets & Countertops  
 Granite, Quartz, Solid Surface, Showers  
 Office #: 512-251-9279 Fax #: 512-251-4445  
 Email: gscabs@ymail.com  
 Account Reps:  
 Andrew Keown/ John Wells/ Dale Murrow  
 www.goldstarcabinets.com

**tBi**  
 TEXAS BRIGHT IDEAS  
 Lighting - Window Coverings  
 Ceiling Fans - Builders Hardware  
 HARKER HEIGHTS 254-699-2509  
 GEORGETOWN 512-930-2005  
 EMAIL TBIG@HOT.RR.COM • WWW.TEXASBRIGHTIDEAS.COM



Booths are filling up quickly - contact us at 254-773-0445 or [info@tahb.org](mailto:info@tahb.org) to reserve your spot now. We would love to tell you more about this opportunity to showcase your business to thousands of local consumers who attend the show looking for ideas and information about their Home & Garden needs!

**There is no better way to reach 4500 potential customers in one weekend and show them what you have to offer.**

The 2016 Show Registration Packet is available [here](#) for any potential exhibitors seeking information.



**Thank You to our 2016 Title Sponsor and Show Partners. Additional Show Partnerships and advertising opportunities are available. Contact us to learn more about these opportunities and benefits!**

# TEMPLE DAILY TELEGRAM



[On The Level - Table Of Contents](#)

*Serving Central Texas for over 50 years!*

**NORMAN**  
**BUILDING MATERIALS, INC.**

South Main – Interstate 35  
P. O. Box 576  
Belton, TX 76513

Frank Norman      Office (254) 939-5132  
Mobile (254) 534-2532      Fax (254) 939-7213



*Serving all of Bell and Coryell Counties*


Temple  
254.773.7750  
Salado  
254.947.8480  
Harker Heights  
254.699.1102  
Gatesville  
254.865.2114

[www.fcttx.com](http://www.fcttx.com)  
[www.facebook.com/fcttx](http://www.facebook.com/fcttx)

**LINDA CHAISON**  
President  
[lchaison@centralandtitle.com](mailto:lchaison@centralandtitle.com)  
2005 Birdcreek Drive Suite 100  
Temple, TX 76502  
254.771.1346

**CENTRAL LAND**  
TITLE COMPANY

 **PROPANE**  
★ THE CLEAR ALTERNATIVE FOR YOUR HOME ★  
COOKING HEATING DRYING GAS LOGS GRILLING WATER HEATING  
**STAR TEX**  
★  
**PROPANE, INC.**  
23330 S.E. H.K. Dodgen Loop • Temple, TX 76504  
Toll Free (800)525-9205 Office (254)773-5717

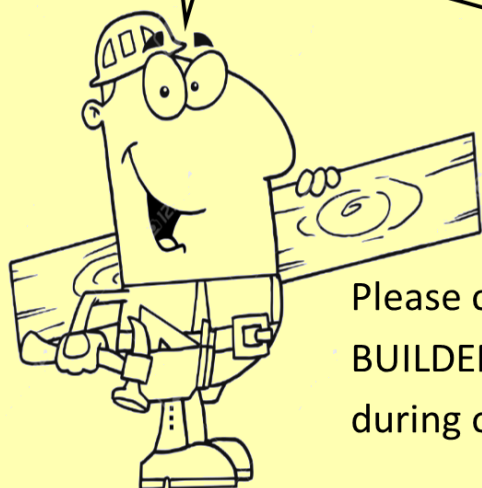
 **Tri-Supply**  
DOORS, MOULDINGS, COLUMNS & MORE  
Gary Vasek Kevin Lynch David Gommert  
Mason Allen Randy Goeke David Driver  
(254) 771-3500 500 East Ridge Blvd Temple, TX 76502

 **Lendefeld Lumber Co.**  
Serving Central Texas for over 50 years!  
Willie James Jim Crawford Danny Owens Bruce Walker  
8 N. 13th Street Temple, TX 76501  
(254) 773-2609 Fax (254) 774-7660  


# DO YOU HAVE...

ITEMS YOU WANT TO REMOVE  
FROM YOUR INVENTORY  
BEFORE THE END OF THE  
YEAR?

OVERSTOCK PRODUCTS THAT  
ARE TAKING UP  
VALUABLE SPACE IN YOUR  
WAREHOUSE?



Please consider being a part of the  
**BUILDER'S SURPLUS SALE**  
during our



To donate items to our Builder Surplus Sale or for questions or more details, please contact Kacie Beevers at 254-773-0445 or [kacie@tahb.org](mailto:kacie@tahb.org) or LaVonna with Carothers Interiors at 254-939-5109 or [lavonna@carothersinteriors.com](mailto:lavonna@carothersinteriors.com)

Consolidated  
Reinforcement,  
Inc.

C  
R  
I

Post Tension - Rebar - Material - Labor

Arthur Uresti  
Superintendent

Belton  
(254) 939-0888

2016 So. Hwy Blvd.  
Belton, Texas 76513

Victoria  
(512) 578-3569

Laredo  
(512) 727-6228

Austin  
(512) 251-0606

MONTEITH  
Abstract & Title Co.

Brad Turner  
Executive Vice President

2010 Bird Creek Drive  
Suite 102  
Temple, TX 76502

(254) 773-9035  
(254) 939-5791  
FAX (254) 773-9247

LOCHRIDGEPRIEST  
HEATING • AIR CONDITIONING • PLUMBING

LENNOX

3149 Kegley Lane  
Temple Texas 76502 • 254.773.0003  
TACLA24360C / M-41036

**OSHA Agrees to Postpone Confined Spaces Rule Enforcement**

In a victory for single-family residential home builders, the Occupation Health and Safety Administration (OSHA) announced Oct. 2 its decision to delay enforcement of the new Confined Spaces in Construction Standard until Jan. 8, 2016.

Though the ruling became effective Aug. 3, OSHA has agreed to refrain from issuing citations to any employer that is making good-faith efforts to comply with the standard.

This temporary enforcement policy applies to construction on single-family homes, duplexes and townhouses in federal jurisdictions, but does not include multi-unit apartment building.

An overview of the rule is available [here](#)

[On The Level - Table Of Contents](#)



2015-2017

Texas Residential Construction Contracts Package

Order Online

New Contracts Available **September 1, 2015**

Order Online at **www.TexasBuilders.org**

TEXAS  
ASSOCIATION  
OF  
BUILDERS

Available only to builder and remodeler members of the Texas Association of Builders, TAB's contracts package subscription is your blueprint for typical construction and remodeling transactions in the State of Texas. At a cost of only \$299.99 plus tax\*, the package of contracts and related addenda is a fantastic value and can save you thousands of dollars in legal fees. As always, the subscription includes any needed updates that may occur during the two year cycle.  
\* The contracts package will cost \$399.99 plus tax after December 31, 2015.

**TAB's 2015-2017 Residential Construction Contracts now available**

Builder and Remodeler members have the option of purchasing TAB's updated 2015-2017 contracts package. **Unlike other contracts packages, TAB's package reflects the most recent mandates coming out of the 2015 Texas Legislative Session and case law updates, in addition to a new design-build contract and architect addendum.** As always, the package will also be updated to include needed clarifications, various improvements and greater ease of use.

The TAB Contracts subscription is your blueprint for typical construction and remodeling transactions in the State of Texas. The package of contracts and related addenda is a fantastic value and can save you thousands of dollars in legal fees. The subscription includes any needed updates that may occur during the two year cycle.

The TAB Contracts are available at <http://www.texasbuilders.org/membership/tab-contracts-package.html>

[On The Level - Table Of Contents](#)

**Make sure and take a look at the Photo Album on our Facebook Page**



2015 HomePAC Sporting Clay Shoot



THANK YOU TO OUR 2015 SPORTING CLAY SHOOTOUT SPONSORS



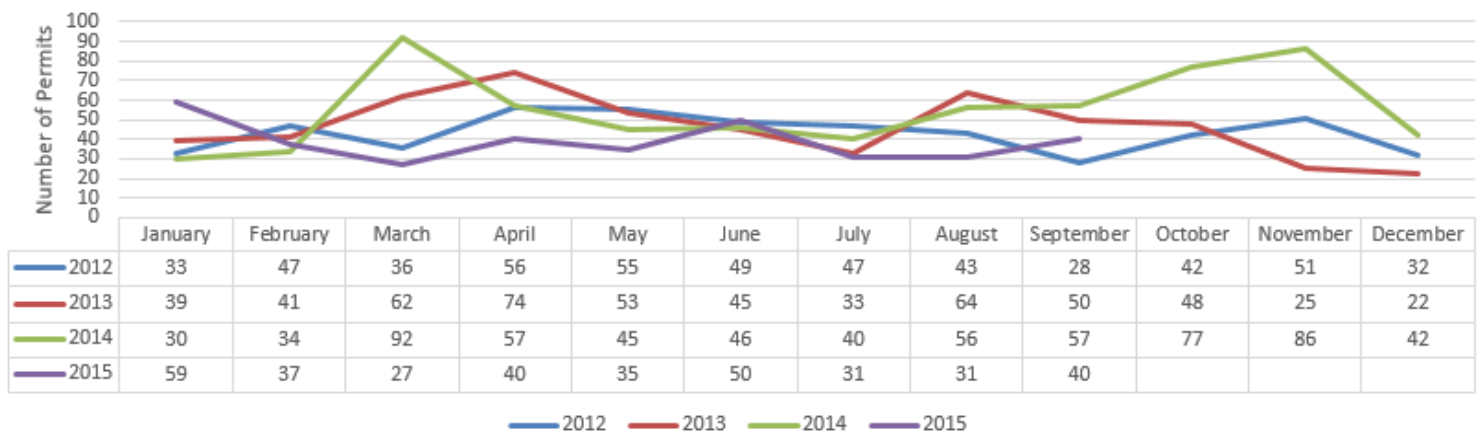
**James Hardie**



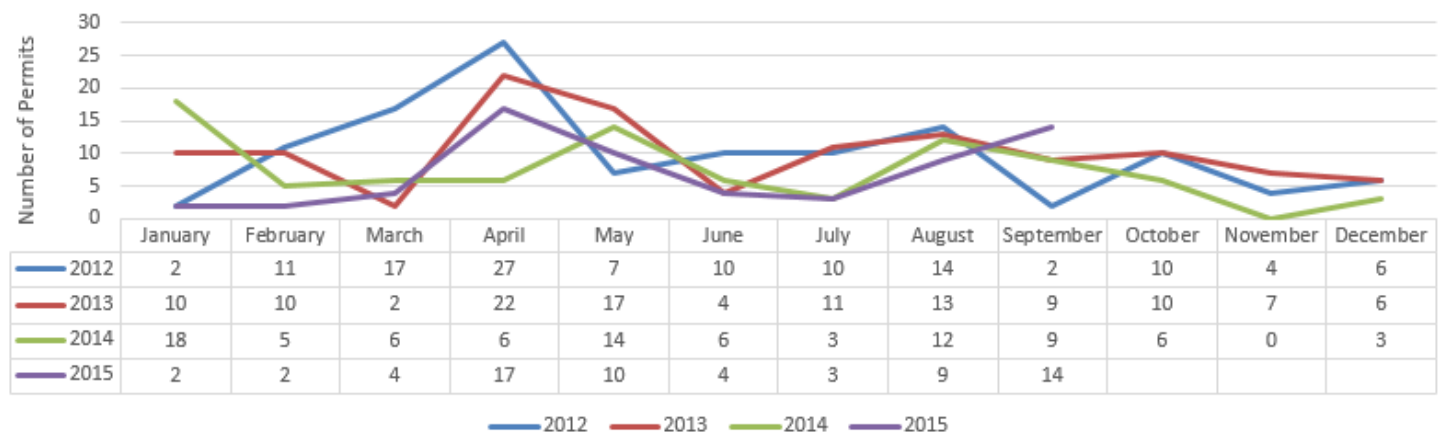
Harrell, Stoeber & Russell, Texas Association of Builders, Boise Cascade,  
Patco Construction, All County Surveying, Rusco Packaging, Baird, Crews, Schiller & Whitaker, Simpson Strong Tie,  
Turley Associates, Inc., Wildflower Country Club, Bell Air Conditioning,  
Prime Source, John Bailey Financial, Kelly-Moore Paints

[On The Level - Table Of Contents](#)

## New Single-Family Home & Duplex Permits Issued in Temple, TX (monthly)



## New Single-Family Home & Duplex Permits Issued in Belton, TX (monthly)



[On The Level - Table Of Contents](#)

### **TABA Membership Spike Club Roster - Top 10**

Jim Howe -- Omega -- 549 Credits

Christopher Butler -- Jubilee Homes -- 541 Credits

John Kiella -- Kiella Homebuilders -- 462 Credits

Jason Carothers -- Carothers Executive Homes -- 298 Credits

Linda Strickel -- Bonded Builders Warranty Group -- 270 Credits

Charles Amos -- Amos Electrical Supply -- 267 Credits

Curtis Locky -- Lochridge-Priest -- 210 Credits

Dean Winkler -- CRW Construction -- 164 Credits

John Paysse -- 123 Credits

Robbie Johnson -- Stillwater Custom Homes -- 121 Credits

### **What is the Spike Club?**

The NAHB Spike Club is composed of all of the individual members and employees of members in local associations who have attained Spike status. It is a vehicle to recognize these members for their outstanding achievements in member recruitment and retention in their local home builders association.

### **How do I earn Spike Credits?**

Individuals earn Spike Credits by sponsoring new members, and by those new members retaining their membership. Spike credits have the following values: 1.0 credit for new Builder or Associate members and 0.5 credit for new council members, Affiliate memberships, and Builder and Associate renewal memberships.

### **What is one example of a Spike Club perk?**

Other than bragging rights... Spikes can attend the NAHB Spike Party & Directors' Reception held each year during the International Builders' Show. The Spike Party & Director's Reception recognizes and honors Spikes across the country for their continued commitment to membership development. To qualify to attend the Spike Party & Director's Reception, each Spike must have a minimum of 6 credits and must earn at least one new member credit between November 1 2013 - October 31 2014.

[On The Level - Table Of Contents](#)

---

## **Please take a moment and check out our members!**

-- Cyclone Corral BBQ -- Empire Custom Homes --

### **October 2015 Renewals**

The following companies have shown their commitment to the industry by renewing their memberships. Thank you!

-- Arnold Builders -- Barge Properties -- Brockway, Gersbach, Franklin & Niemeier -- Orlowski & Hansen -- Patco Construction -- Purifoy & Company -- SWBC Mortgage --

## **Do Business with a member!**

Our current members are our most valuable recruitment tools! Are you encouraging the people that you do business with to join TABA? There is strength in numbers! If your industry doesn't have a strong voice, your business will be impacted one way or another. This could mean less infrastructure development or it could mean more regulation and higher fees. Either way, your ability to grow your business could be limited if you don't have an advocate in the halls of government.

TABA not only provides networking and marketing opportunities that help you promote your business, we also navigate the political waters to help provide a pro-business environment.

I encourage you to engage your business associates, and have them join TABA so we can continue to move our industry forward! Contact us at [info@tahb.org](mailto:info@tahb.org) or 254.773.0445 for more information on how to refer your business associates, or to pass on leads regarding prospective members!

[On The Level - Table Of Contents](#)

---

## **Membership News and Announcements**

Do you have an announcement about your member company that you would like to share with the broader TABA membership? Contact us at [info@tahb.org](mailto:info@tahb.org) or 254-773-0445 to share

## **Membership Initiative**

As part of a new membership initiative, we are asking our TABA Builder members to provide a list of the vendors and subcontractors that they do more than \$5,000 in annual business with. Upon receipt, TABA will determine who on your list is already an Associate member and who TABA and you should contact to become a member. You may think you are already doing business with a member - but they may not be! Let's increase the strength of our industry's voice by bringing in those vendors and subcontractors who aren't members yet.

Participants will earn credit, prizes, and recognition for recruiting new members that they do business with as well as increasing the percentage of TABA members they work with.

Submit your list of vendors and subcontractors today! This will provide TABA some solid leads for recruitment - and some builder members who can follow up with these vendors and subcontractors!

Associate members can participate too - just send us a list of folks you do business with who you think are members or who you think should be!

All information provided will be kept confidential - TABA will not share your information.

"Do Business With a Member"!

[Entry Form](#)

[On The Level - Table Of Contents](#)

## **Membership Benefits**

### **Member Rebate Program**

Are you taking advantage of the Texas Association of Builders (TAB) Member Rebate Program? You can save hundreds of dollars each quarter by applying for rebates offered by more than 40 housing industry product manufacturers. This simple process allows you to take advantage of manufacturer rebates, regardless of your volume.

Through the TAB Member Rebate Program, leading manufacturers pay rebates to builders and remodelers – a thank you to our members for your loyalty to their products. You may already be using many of these products, so sign up today to learn if you are eligible to receive quarterly rewards.

There is no fee to join. No receipts needed!

Visit <http://www.hbarebates.com/tab.html> to learn more or call (866) 849-8900

[Programs Exclusive to Members of the Texas Association of Builders](#)



Find out more information about NAHB Private Offers, or search for your new vehicle at [Don Ringler Chevrolet](#), a long time TABA member and the exclusive [GM Business Elite Dealer](#) in the Waco/Temple/Killeen area!

You can always visit [www.nahb.org/ma](http://www.nahb.org/ma) to learn about these and additional member benefits and discounts!

**Lowe's** - Visit [www.LowesForPros.com/NAHB](http://www.LowesForPros.com/NAHB) or call 877-435-2440 and register to save 2% on your Lowe's Accounts Receivable (LAR) purchases and free delivery on purchases over \$500. Save an additional 5% every day at the store when they mention the 5% at time of purchase and when using their LAR.

**General Motors** - \$500 exclusive private offer on most Buick, Chevrolet and GMC vehicles. Business Owners receive a \$1000 private offer on select vehicles and may also qualify for additional incentives, visit [www.nahb.org/ma](http://www.nahb.org/ma) and click on the GM logo to find out more.

**AT&T, Verizon, Sprint & T-Mobile** - Savings up to 35% including a free analysis of new and existing plans. Program offers free mobile to ANY mobile, free mobile device management, dedicated help desk support, and much more. Visit [www.eMemberBenefits.com/NAHB](http://www.eMemberBenefits.com/NAHB) or call



866-430-NAHB (6242).

**2-10 Home Buyers Warranty** - Visit [www.2-10.com/NAHB](http://www.2-10.com/NAHB) or call 855-280-1328 to receive exclusive access to discounts on select products, including the Builder Backed Service Program and the systems and appliances warranty.

**AXA Equitable** - Offers full-service, low-cost retirement plans that can help reduce taxes while saving for life in retirement. Visit [www.axa.com/nahb](http://www.axa.com/nahb) or call 800-523-1125, option 3, department 2046 and mention NAHB.

**UPS Savings Program & YRC Freight** - UPS discounts of up to 36% on a broad portfolio of shipping services. Savings of at least 70% on less-than-truckload shipments 150 lbs. or more with UPS Freight and YRC Freight. Visit [www.1800members.com/NAHB](http://www.1800members.com/NAHB) or call 1.800.MEMBERS (800-636-2377) for more information.

**TransFirst** - Payment solutions with average savings of 16% per year. Web/mobile tools, credit card and eCheck processing and more. Free "Savings Analysis" call 800-613-0148 or visit [www.TransFirstAssociation.com/NAHB](http://www.TransFirstAssociation.com/NAHB).

**Dell** - Up to 30% off on all Dell computers. Call 800-757-8442 and Mention NAHB or visit [www.dell.com/nahb](http://www.dell.com/nahb)

**Associated Petroleum Products (APP)** - Earn \$0.015 for EVERY gallon purchased using the APP Fuel Card program. Visit [www.associatedpetroleum.com/nahb](http://www.associatedpetroleum.com/nahb) to enroll or call 800-929-5243, Option 6 & mention NAHB.

**GEICO** - Exclusive discounts for members on auto and home owners insurance. Visit [www.geico.com/disc/nahb](http://www.geico.com/disc/nahb) or call 800-368-2734 and mention NAHB for a free quote.

**Hertz** - Up to 20% off on rental cars and FREE Gold Plus Rewards membership. Visit [www.hertz.com/nahb](http://www.hertz.com/nahb) or call 800-654-2200 and use CDP# 51046.

**Avis** - Up to 25% off rental cars and FREE Avis Preferred Service membership at [www.avis.com/nahb](http://www.avis.com/nahb) or call 800-331-1212 and use AWD code G572900

**Budget** - Up to 20% off rental cars and FREE Budget Fastbreak at [www.budget.com/nahb](http://www.budget.com/nahb) or call 800-283-4387 and use BCD code Z536900

**Office Depot** - 10% off all delivery orders. Free shipping on orders of \$50 or more. Call 800-274-2753 mention NAHB.

**Omaha Steaks** - Save 10%, in addition to any online specials. [www.OSincentives.com/promo/nahb](http://www.OSincentives.com/promo/nahb)

**Endless Vacation Rentals** - 25% discount on over 200,000 vacation rentals worldwide. Call 877-782-9387 and mention NAHB at time of reservation or go to [www.endlessvacationrentals.com/nahb](http://www.endlessvacationrentals.com/nahb)

**Wyndham Hotel Group** - 15% off at over 7,400 hotels. Call 877-670-7088 and mention ID 8000002688. Go to [www.nahb.org/ma](http://www.nahb.org/ma) and click on the Wyndham logo to find out more

**FTD** - 20% off floral arrangements and gifts at [www.ftd.com/nahb](http://www.ftd.com/nahb) or call 800-SEND-FTD use code 17421

**NAHB Career Center** [www.nahb.org/careers](http://www.nahb.org/careers) - 20% off of standard rates for job posting & 15% off other HR services.

[On The Level - Table Of Contents](#)



VOTER GUIDE

Tuesday, November 3, 2015

Vote Early October 19 - 30



In August, the Temple ISD Board of Trustees unanimously approved calling a \$136.5 million bond election that will enable TISD to complete a multi-year improvement plan for facilities throughout the district. TABA Home-PAC Trustees voted to support Temple ISD's bond election and encourage you to do the same by **VOTING YES** for the bond.

If you are not a TISD voter, there are still some important items for our industry on the ballot. The Texas Association of Builders worked hard to pass three initiatives at the legislative level that will benefit our industry and homeowners alike. These initiatives still need voter approval in order to become law. As industry professionals please spread the word and encourage folks to

VOTE YES on Props 1, 2 and 7.

Proposition 1 (SJR 1)

VOTE YES!

**Prop 1** raises the homestead exemption that is used to determine a homeowner's property tax for public school funding purposes. Prop 1 also prohibits a real estate transfer tax.

**Exemption increase of \$10,000 = \$120 savings to the average homeowner**

*"The constitutional amendment increasing the amount of the residence homestead exemption from ad valorem taxation for public school purposes from \$15,000 to \$25,000, providing for a reduction of the limitation on the total amount of ad valorem taxes that may be imposed for those purposes on the homestead of an elderly or disabled person to reflect the increased exemption amount, authorizing the legislature to prohibit a political subdivision that has adopted an optional residence homestead exemption*

*from ad valorem taxation from reducing the amount of or repealing the exemption, and prohibiting the enactment of a law that imposes a transfer tax on a transaction that conveys fee simple title to real property."*

Proposition 2 (HJR 75)

VOTE YES!

**Prop 2** allows the current homestead exemption for the surviving spouse of a 100% disabled veteran to be retroactive and apply to the spouse of a totally disabled veteran who passed away before the exemption originally took place.

*"The constitutional amendment authorizing the legislature to provide for an exemption from ad valorem taxation of all or part of the market value of the residence homestead of the surviving spouse of a 100 percent or totally disabled veteran who died before the law authorizing a residence homestead exemption for such a veteran took effect."*

Proposition 7 (SJR 5)

VOTE YES!

**Prop 7** helps to build better, safer roads for all Texans by dedicating certain sales and use tax revenue and motor vehicle sales tax revenue to the state highway fund. These allocated funds will be used to provide funding for nontolled roads and to reduce the state's transportation-related debt.

**Creates Jobs**  
**No New Taxes or Fees**  
**Less Traffic**

*"The constitutional amendment dedicating certain sales and use tax revenue and motor vehicle sales, use, and rental tax revenue to the state highway fund to provide funding for nontolled roads and the reduction of certain transportation-related debt."*

Political ad paid for by Temple Area Builders Association Home-PAC (TABA Home-PAC). TABA Home-PAC represents your political interests at the local and state level. TABA Home-PAC promotes and financially supports candidates, issues, and causes that are in the best interest of the community TABA serves.

[On The Level - Table Of Contents](#)

© 2016 Temple Area Builders Association  
254-773-0445      257-774-7273 Fax  
12 N. 5th Street      P.O. Box 2002  
Temple, TX 76501      Temple, TX 76503

